



PROGRESS

We dedicate this newsletter to a selection of fine Alfix projects launched from March to May – during the ongoing coronavirus pandemic:

We are sincerely grateful for the large interest and faith placed in Danish Alfix these days. The Kolding based factory has seen a very high level of activity during the last couple of months.

We would like to thank our good customers and business partners. Together, we ensure the building trade a responsible and strong supply chain and hence, we jointly give owners and other partners comfort and assurance. When times are rough and uncertainty generally seems to prevail, we really appreciate a growing support of us as local and sustainable Danish manufacturer in Scandinavia.

A nice summer to everybody!

/TEAM ALFIX



110 BATHROOMS IN EXCLUSIVE AND SUSTAINABLE HOTEL

Alfix currently supplies complete tile fixing systems to the astonishing and historical Hotel Koldingfjord in our hometown Kolding.

The property was built in 1911 and has served as high class hotel and conference center since 1990. There is a fine match between the values of the hotel's high standards in terms of quality and sustainability and the Alfix tile fixing system. The use of Alfix Profix tile adhesive, which contains sustainable fillers from recycled glass, is one of many examples. Light fillers also ensure a light-weight product with excellent workability. Furthermore, the packaging is made from eco-friendly paper.

And when it comes to public spirit and joint responsibility, Hotel Koldingfjord and Alfix as Danish manufacturer of building materials share the same values, too – especially as for the obligation to implement and observe environmental consideration.

For the job at the hotel the following products have been applied: PlaneMix 80 cement, Sealing primer, 2K Sealing membrane, ProFix tile adhesive, Cerafill 10 grout and the high-elastic sealant, Alfix M-Silicone.



DESIGN FLOORING

Alfix TopCoat Design – design floor in shop

In this shop in Middelfart the new product Alfix TopCoat Design has been used as final coat on the underlying flooring of leveling compound.

TopCoat Design is a 1-component, ultra-matt, transparent and working environmentally friendly top coat product for levelled seamless floorings.

[For more details!](#)



POOLS – MANY ONGOING PROJECTS INVOLVING ALFIX



Alfix pool at Frederiksberg – Copenhagen

We have delivered a complete pool system for Damsøbadet in Frederiksberg Idrætspark - a leisure centre with multiple options.

For the Damsøbadet project the following Alfix products have been applied: PlaneMix S40 (Pool and concrete repair mortar), 2K Sealing membrane, ProFix Tile adhesive, IndustryFuge – CeraFill 18 and C2 Epoxy (chemical and acid resistant grout and adhesive).

Contractor: Combi Byg A/S.

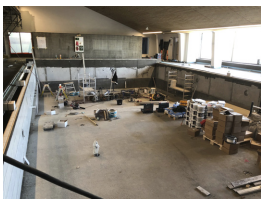


Pool for Vestamager – Copenhagen

For Vestamager pool the following Alfix pool product system has been applied:

Alfix Sealing primer, ProFix Tile adhesive, 2K Sealing membrane, IndustryFuge – CeraFill 18, C2 Epoxy (chemical and acid resistant grout and adhesive), and Alfix Waterproofing membrane Pro.

Contractor: GVL



Thyborøn Vandkulturhus – 3 pools

The leisure centre Thyborøn Vandkulturhus has been supplied with several deliveries of Alfix products. Currently, the project is in progress in one out of three pools. The Alfix system covers: PlaneMix S40 (Pool and concrete repair mortar), 2K Sealing membrane, ProFix tile adhesive, IndustryFuge - CeraFill 18 grout and

C2 Epoxy (chemical and acid resistant grout and adhesive)

Contractor: Jens Jensen Murer og Entreprenør A/S



Pool in Norway - Bergen

In Vaksdal municipality - Hordaland Fylke Alfix products also form part of a comprehensive pool renovation – such as a 25 meter pool.

The supplier of building materials is Modena Gruppen AS, and tile contractor is Mur og Fliservice AS in Bergen. A number of Alfix products are included in the system applied - among others: PlaneMixPrimer, Sealing primer, 1K Sealing membrane, 2K Sealing membrane, ProFix Tile adhesive, Flexbinder, Epoxy primer, C2 Epoxy, IndustryFuge – CeraFill 18, UniversalFuge, P-Silikon Primer and high-elastic sealant M-Silicon.



Pool in Sweden - Hallstavik

Alfix has supplied products for an exciting pool project in Hallstavik (north of Stockholm).

Tiles have been fixed with Alfix ProFix tile adhesive added Flexbinder.

The supplier of building materials is Konradssons Kakel.





DURABLE FACADES



Exclusive home in Copenhagen – Alfix DuraTherm facade system

For this job Alfix DuraTherm complete with 100 mm facade insulation has been used. The white finishing render is Alfix DuraPuds 804 (Fleksible thin coat finishing render).



The capital area – 300 m² facade on house

On this large facade construction workers have used Alfix DuraPuds 810 (Flexible fibre-reinforced render) and Alfix DuraPuds 800SR in white. Rendering has been made onto facade boards from Fermacell. A long-life, durable Danish facade system for the large home with a silicone resin-based finishing render, which ensures a tough and strong facade that effectively prevents algae and fungus growth.

[For more details!](#)



Energy renovation of functionalist home in Horsens

The elegant and stylish functionalism-inspired home in East Jutland has been energy renovated with Alfix DuraTherm facade insulation system. The system in use includes insulation with 100 mm mineral wool.

[For more details!](#)



Bornholm-situated home with Alfix silikon resin-based render

This fine house has received a base coat rendering of Alfix DuraPuds 810 (Flexible fibre render) reinforced with fiberglass mesh, Alfix Reinforcement mesh 4x4 mm, and a final finishing coat of DuraPuds 800 SR (Silicone resin-based facade render) in the colour Antique. Plinths have been rendered with Alfix DuraPuds 615 (water-repellant plinth render) and painted with the silicone resin-based paint Alfix DuraDec 8000 SR in the colour Graphite.



Home with panoramic view in Kolding – painted with Alfix

To the owner of this beautiful home painting with a long-lasting and durable paint was of highest priority. Alfix DuraDec 8000 SR is a durable and diffusion-open silicone resin-based paint suitable for facades. The paint prevents algae and fungus growth as well as other contaminations from attacking the surface. The paint is also highly suitable for withstanding the ever-changing Danish climate that offers sun, wind and heavy rain in periods.

[For more details](#)



Alfix renews and protects large facade in Frederikshavn

This astonishing and iconic building in Frederikshavn has been façade renovated with Alfix. The following products have been applied: Alfix DuraPuds 710 (Bonding and thin coat rendering) in grey and Alfix DuraPuds 800 SR (Silicone resin-based render) in white. With the latter product as final coat algae, fungus and other contaminants will be given a hard time, whereas the facade maintains white, intact and clean for many years to come.

[For more details](#)



SUSTAINABLE IMPACT AND NOISE REDUCTION

Our good and long-standing Swedish customer Konradssons Kakel purchases large amounts of the new, effective and sustainable Alfix product: Acoustic PS3 – Recycled (acoustic underlay). Packed and stacked on pallets ready to be stocked in the modern warehouse in Malmö. The product is nominated for the Danish green building award Byggeriets Miljøpris 2020.



In Denmark and Norway there is also an increasing interest for acoustic and thermal insulation with Alfix within both private housing as well as office environments, public housing, etc.



[For further information about this green Alfix product news read here!](#)



Danish family-owned
business since 1963