

RESPONSIBLE BUILDING

ALFIX ENVIRONMENTAL DOCUMENTATION



Responsible Danish manufacturer

For more than 20 years, Alfix has worked dedicatedly and determined to reduce environmental impact while still producing working environmentally friendly products and solutions to the market.

“Reliable Strength” is our slogan today, which signals that we also intend to take responsibility for socially relevant aspects of society.

In the following pages we present an overview of the environmental documentation for the Alfix product range along with a graphical overview of recent milestones in the areas of environment, occupational health, and social responsibility.

Levelling compounds

| Product | Product type / category | EMICODE | EPD | Nordic Ecolabelling - Listed *) | DGNB 2020 ENV1.2 | Basta konform | Byggvaru-bedömningen ACCEPTERAS | Sundahus |
|--------------------------|-------------------------|---------|-----|---------------------------------|------------------|---------------|---------------------------------|----------|
| PlaneMixPrimer | Primer/binder | ■ | ■ | ■ | ■ | ■ | ■ | B |
| PlaneMixBinder | Primer/binder | | ■ | | | | | |
| Expansion list for walls | Accessories | | | ■ | | ■ | | B |
| TopCoat Design | Levelling compounds | ■ | ■ | | ■ | | | |
| PlaneMix S8 rapid | Levelling compounds | ■ | ■ | ■ | ■ | ■ | ■ | B |
| PlaneMix 10 | Levelling compounds | ■ | ■ | ■ | ■ | ■ | ■ | B |
| PlaneMix S12 rapid | Levelling compounds | ■ | ■ | ■ | ■ | ■ | ■ | B |
| PlaneMix 20 | Levelling compounds | ■ | ■ | ■ | ■ | ■ | ■ | B |
| PlaneMix 25 Exterior | Levelling compounds | ■ | ■ | ■ | ■ | ■ | | |
| PlaneMix 30 | Levelling compounds | ■ | ■ | ■ | ■ | ■ | | |
| PlaneMix S40 | Levelling compounds | ■ | ■ | ■ | ■ | ■ | | |
| PlaneMix 50 | Levelling compounds | ■ | ■ | ■ | ■ | ■ | ■ | B |
| PlaneMix 50 less dust | Levelling compounds | ■ | ■ | ■ | ■ | ■ | ■ | B |
| PlaneMix 60 | Levelling compounds | ■ | ■ | ■ | ■ | ■ | ■ | B |
| PlaneMix 80 | Levelling compounds | ■ | ■ | ■ | ■ | ■ | | |
| PlaneMix 90 Plus | Levelling compounds | ■ | ■ | ■ | ■ | ■ | ■ | B |
| PlaneMix 100 | Levelling compounds | ■ | ■ | ■ | ■ | ■ | | |

Tanking systems

| Product | Product type / category | EMICODE | EPD | Nordic Ecolabelling - Listed *) | DGNB 2020 ENV1.2 | Basta konform | Byggvaru-bedömningen ACCEPTERAS | Sundahus |
|-----------------------------------|-------------------------|---------|-----|---------------------------------|------------------|---------------|---------------------------------|----------|
| 1K Sealing Membrane | Sealing membrane | ■ | ■ | ■ | ■ | ■ | ■ | C+ |
| 2K Binder | Sealing membrane | ■ | ■ | ■ | ■ | ■ | ■ | B |
| 2K Cement | Sealing membrane | ■ | ■ | ■ | ■ | ■ | ■ | B |
| Seal-Strip | Sealing membrane | | | ■ | ■ | ■ | | |
| Reinforcing strip (10 cm x 100 m) | Sealing membrane | | | ■ | ■ | | | |
| Sealing Primer | Primer/binder | ■ | ■ | ■ | ■ | ■ | ■ | B |
| Waterproofing Membrane Pro | Sealing membrane | ■ | | ■ | ■ | ■ | ■ | B |

Tile adhesives

| Product | Product type / category | EMICODE | EPD | Nordic Ecolabelling - Listed *) | DGNB 2020 ENV1.2 | Basta konform | Byggvaru-bedömningen AC-CEPTERAS | Sundahus |
|------------------|-------------------------|---------|-----|---------------------------------|------------------|---------------|----------------------------------|----------|
| CombiFix | Tile adhesive | ■ | ■ | ■ | ■ | ■ | ■ | B |
| CombiQuickFix | Tile adhesive | ■ | ■ | ■ | ■ | ■ | ■ | B |
| FlexFix | Tile adhesive | ■ | ■ | ■ | ■ | ■ | ■ | |
| LetFix Plus | Tile adhesive | ■ | ■ | ■ | ■ | ■ | ■ | B |
| LetFix less dust | Tile adhesive | ■ | ■ | ■ | ■ | ■ | ■ | B |
| LetFix | Tile adhesive | ■ | ■ | ■ | ■ | ■ | ■ | B |
| LetFix Universal | Tile adhesive | ■ | ■ | ■ | ■ | ■ | ■ | B |
| NormalFix | Tile adhesive | ■ | ■ | ■ | ■ | ■ | ■ | B |
| ProFix Plus | Tile adhesive | ■ | ■ | ■ | ■ | ■ | ■ | B |
| ProFix | Tile adhesive | ■ | ■ | ■ | ■ | ■ | ■ | B |
| QuickFix premium | Tile adhesive | ■ | ■ | ■ | ■ | ■ | ■ | |
| ReadyFlex | Tile adhesive | | ■ | ■ | ■ | ■ | | |
| FlexBinder | Primer/binder | ■ | ■ | | ■ | ■ | ■ | B |

Tile grouts

| Product | Product type / category | EMICODE | EPD | Nordic Ecolabelling - Listed *) | DGNB 2020 ENV1.2 | Basta konform | Byggvaru-bedömningen AC-CEPTERAS | Sundahus |
|-----------------------------|-------------------------|---------|-----|---------------------------------|------------------|---------------|----------------------------------|----------|
| FineFuge - CeraFill 5 | Grout | ■ | ■ | ■ | ■ | ■ | ■ | B |
| QuickFuge 8 premium | Grout | ■ | ■ | ■ | ■ | ■ | ■ | B |
| UniversalFuge - CeraFill 10 | Grout | ■ | ■ | ■ | ■ | ■ | ■ | B |
| IndustryFuge - CeraFill 18 | Grout | ■ | ■ | ■ | ■ | ■ | ■ | B |
| RustiqFuge - CeraFill 20 | Grout | ■ | ■ | ■ | ■ | ■ | ■ | B |
| C2 Epoxy | Grout/tile adhesive | ■ | ■ | | ■ | | | B |
| M-Silicon | Fugemasse | ■ | ■ | ■ | ■ | ■ | ■ | B |

Render

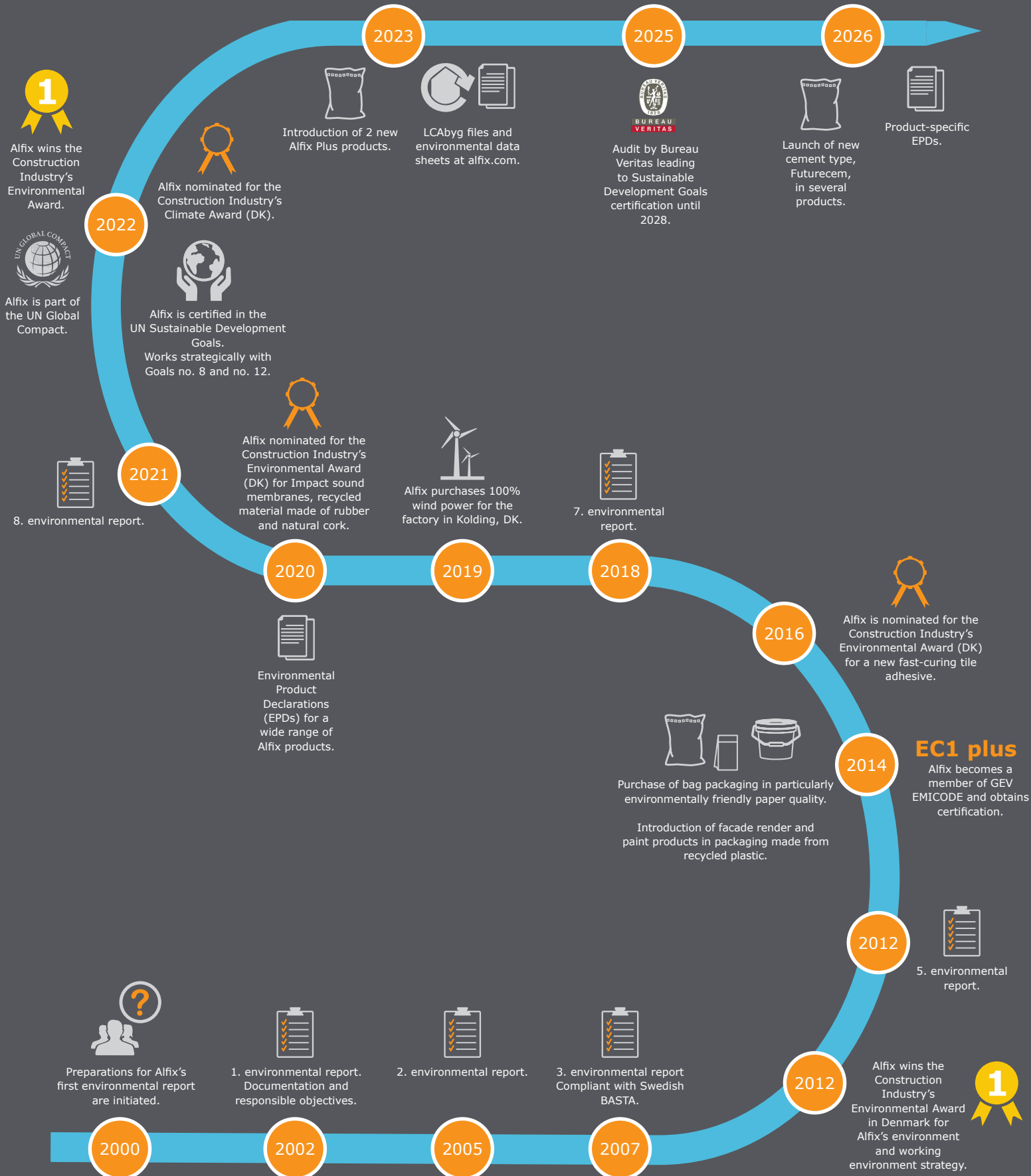
| Product | Product type / category | EMICODE | EPD | Nordic Ecolabelling - Listed *) | DGNB 2020 ENV1.2 | Basta konform | Byggvaru-bedömningen AC-CEPTERAS | Sundahus |
|-----------------|-------------------------|---------|-----|---------------------------------|------------------|---------------|----------------------------------|----------|
| DuraPuds 615 | Render | ■ | ■ | ■ | ■ | ■ | | |
| DuraPuds 650 | Render | ■ | ■ | ■ | ■ | ■ | ■ | B |
| DuraPuds 703 | Render | ■ | ■ | ■ | ■ | ■ | | |
| DuraPuds 710 | Render | ■ | ■ | ■ | ■ | ■ | | |
| DuraPuds 800 SR | Render | | ■ | | ■ | | | |
| DuraPuds 804 | Render | ■ | ■ | ■ | ■ | ■ | | |
| DuraPuds 810 | Render | | ■ | ■ | ■ | ■ | | |
| DuraPuds 830 | Render | | ■ | | | ■ | | |

Acoustic underlay

| Product | Product type / category | EMICODE | EPD | Nordic Ecolabelling - Listed *) | DGNB 2020 ENV1.2 | Basta konform | Byggvaru-bedömningen AC-CEPTERAS | Sundahus |
|--------------|-------------------------|---------|-----|---------------------------------|------------------|---------------|----------------------------------|----------|
| Acoustic PS3 | Acoustic underlay | ■ | | ■ | ■ | ■ | ■ | B |
| Acoustic PS5 | Acoustic underlay | ■ | | ■ | ■ | ■ | ■ | B |
| Acoustic U36 | Acoustic underlay | ■ | ■ | ■ | ■ | ■ | ■ | B |
| Acoustic U85 | Acoustic underlay | ■ | ■ | ■ | ■ | ■ | ■ | B |

MILESTONES SINCE 2000

IN THE AREAS OF ENVIRONMENTAL, OCCUPATIONAL, AND SOCIAL RESPONSIBILITY





Alfix is a Danish familyowned business, established in 1963.

We will ensure peace of mind for the people who are building tomorrow's Scandinavia.

The company provides a wide range of products: Screed mortar, self-levelling compounds, wet room products, tile adhesives, grout, smooth rendering products, façade paint and other special products.

D

K

Dansk produktion & familieeje siden 1963

ALFIX A/S
H. C. Ørsteds Vej 11-13
DK-6000 Kolding

+45 75 52 90 11
alfix@alfix.dk
alfix.com

ALFIX[®]
Responsible strength