

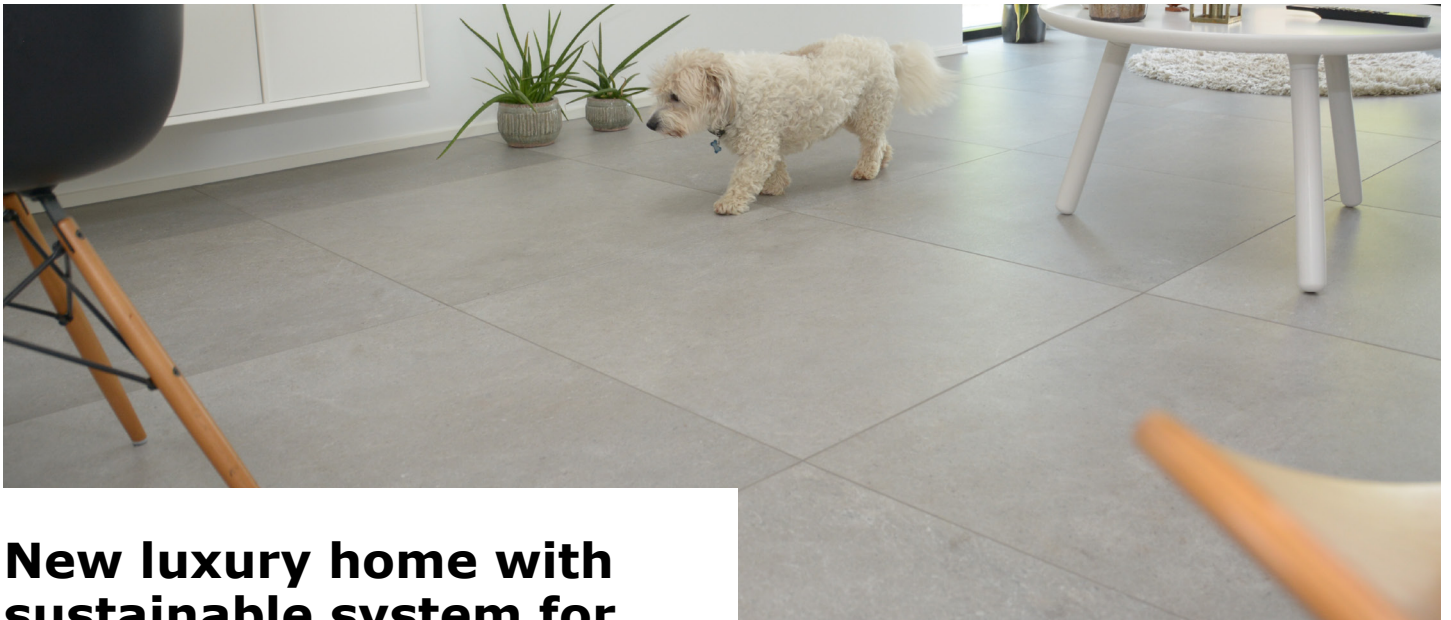
LOTS OF ACTIVITY

Autumn has arrived, and there's still plenty of activity at Alfix in Denmark. This edition of the newsletter includes an article about Alfix's new sustainable acoustic flooring underlay and a video about our new product, Alfix TopCoat Design.

You can also read about the upcoming expansion of our factory in Kolding, and more.

Happy reading!

/Team Alfix



New luxury home with sustainable system for reducing impact noise on flooring

The owners of this brand-new home can now enjoy soft and pleasant acoustics thanks to the innovative Alfix Acoustic PS3 Recycled underlay.

Beneath the many beautiful tile floors of the house, the masonry company has installed the noise-reducing underlay from Alfix as a single, continuous system.

"The acoustics are great now, and there's much less echoing noise in our kitchen/family room, which is the hub of our house. We noticed a lot of noise in all the show-homes we visited during our building process," Malene Sander and Jan Siefert from Kolding explain.

An effective solution for acoustic noise from high heels, scraping chairs and dogs

When the clients requested tiled flooring throughout their modern house, it was important for them to have some kind of noise-reducing solution under the hard tiles. In their previous home, they also had tiled floors, which posed some noise-related challenges.

"In our old house, anyone visiting wearing high heels made a hard, scraping sound on the floor. Dragging chairs at our dining table made a lot of noise too.

We don't have these problems any more. But the biggest benefit of our new acoustic solution is when our dog walks on the floor. We don't even hear it any more. Previously, we could clearly hear every movement. So we highly recommend this Alfix noise-reducing solution to others – also for new builds," Malene Sander and Jan Siefert continue.

Green sound – the sound of a clear conscience

Alfix Acoustic PS3 Recycled has a sustainable profile and has been nominated for the Danish construction industry's environmental award, Byggeriets Miljøpris 2020. The product is made from 100% recycled rubber from European car tyres as well as natural cork granules: it is completely sustainable. Property developers in southern Jutland see this as a particular advantage.

"The fact that the product contains recycled materials definitely influenced our choice of this particular solution. We want to help protect the environment where we can. Every little helps."

The Alfix product gives rooms and buildings better acoustics and enhances well-being for users and owners. With an installation height of just 3–4 mm, Alfix Acoustic PS3 Recycled can be used under all types of flooring.

Installing Alfix Acoustic PS3 Recycled can provide noise reduction of up to 19 dB in private homes, large open-plan offices, hotels, schools and many other types of buildings. The exact effects depend on the type of flooring. af typen af gulvbelægning.



ALFIX®



New video: strong and beautiful designer floors

Our latest product, Alfix TopCoat Design, is a single-component, ultra-matte, transparent and user-friendly product for treating levelled designer floors, or New York-style floors.

We've made a video which guides the user step by step through the pre-treatment, tool use, procedure, and maintenance tips.

Watch the video here!



Environmentally friendly packaging – 2K sealing membrane

As part of Alfix's sustainable strategy, all 10kg Alfix 2K sealing membrane buckets are now made of recycled plastic. Recycled plastic is better for the environment than regular plastic, and over the next few years we'll supply even more of our products in recycled, greener plastic packaging.



Alfix expands

In the spring, we purchased a neighbouring site on H.C. Ørsteds Vej in Kolding, where we'll build a new distribution warehouse. This is needed because we've experienced increased activity. The new building is expected to open in late 2021.

ALFIX® elected new references



New home near the forest

This impressive functionalist house was built just a stone's throw from a forest, lake and town in southern Jutland. Its façade system is from the Alfix DuraPuds range, as the façade insulation is rendered directly. Among the products used are Alfix DuraPuds 810 (flexible fibre render) and DuraPuds 804 (flexible, through-coloured thin coat finishing mortar). Subsequently, the façade is painted white using silicone resin-based Alfix DuraDec 8000 SR.

[Read more about Alfix smooth rendering and paints here!](#)

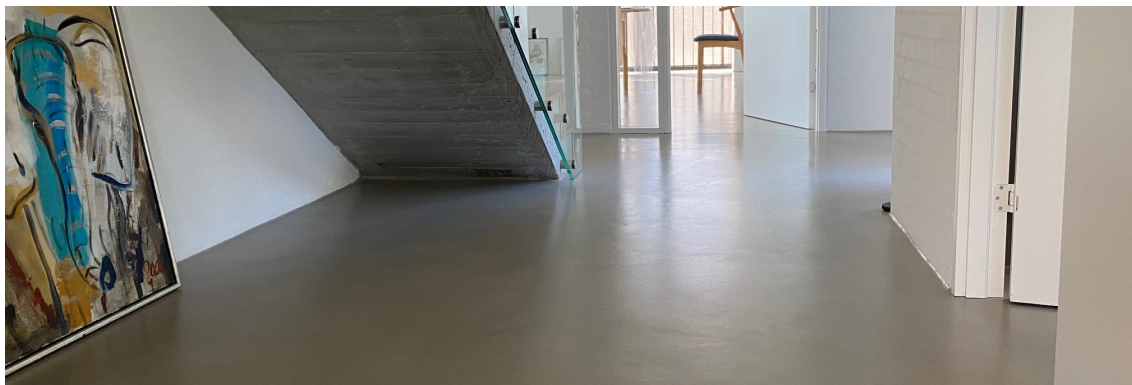


Vejle Police Academy

This is the new Police Academy in Vejle, which has been mentioned in the Danish media. The tile installation system is by Alfix: SealingPrimer, PlaneMixPrimer, reinforcing strips, 1K sealing membrane, ProFix tile adhesive and QuickFuge 8 premium.

The products are used in changing rooms, toilets etc.

The newly built part of the academy will include an auditorium, a sports hall, fitness rooms and classrooms.



Designer floors, New York-style floors, raw floors

There's a lot of interest in designer floors for both homes and shops. These are floors made of cement-based levelling compounds – and Alfix has a proven system.